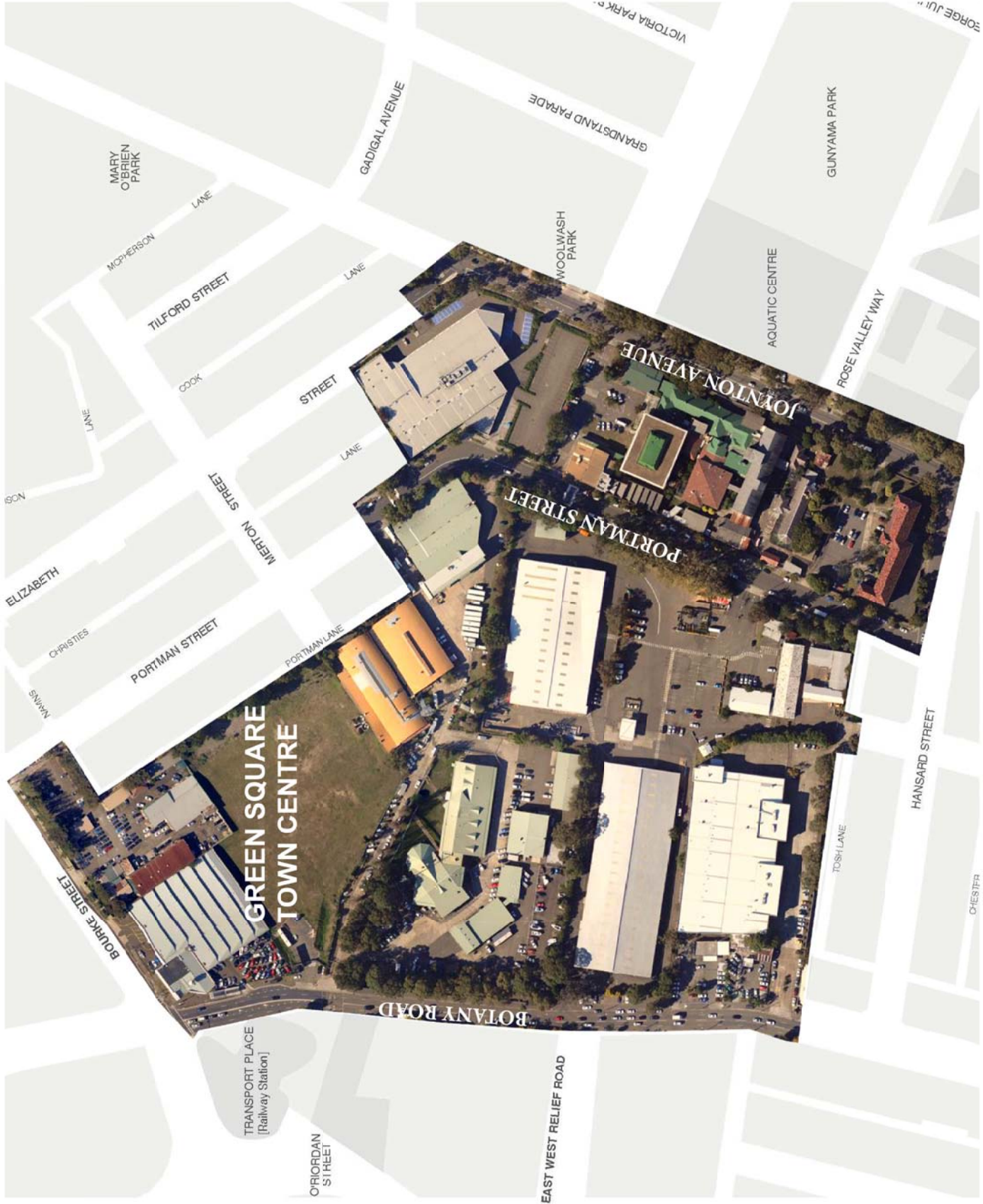


ATTACHMENT B

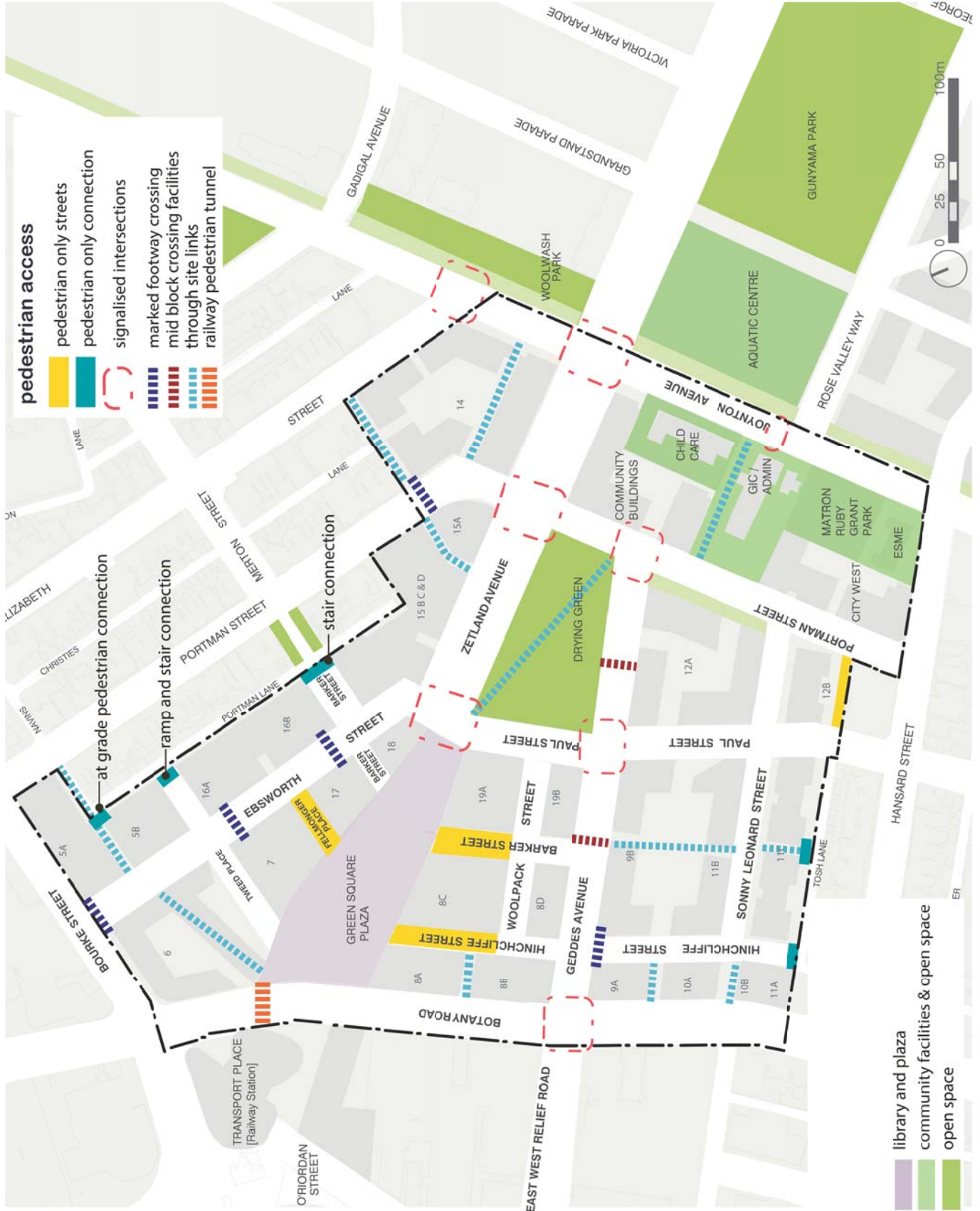
**FRAMEWORK PRINCIPLES AND
STRATEGIES**

Green Square Town Centre framework principles and strategies
existing aerial image

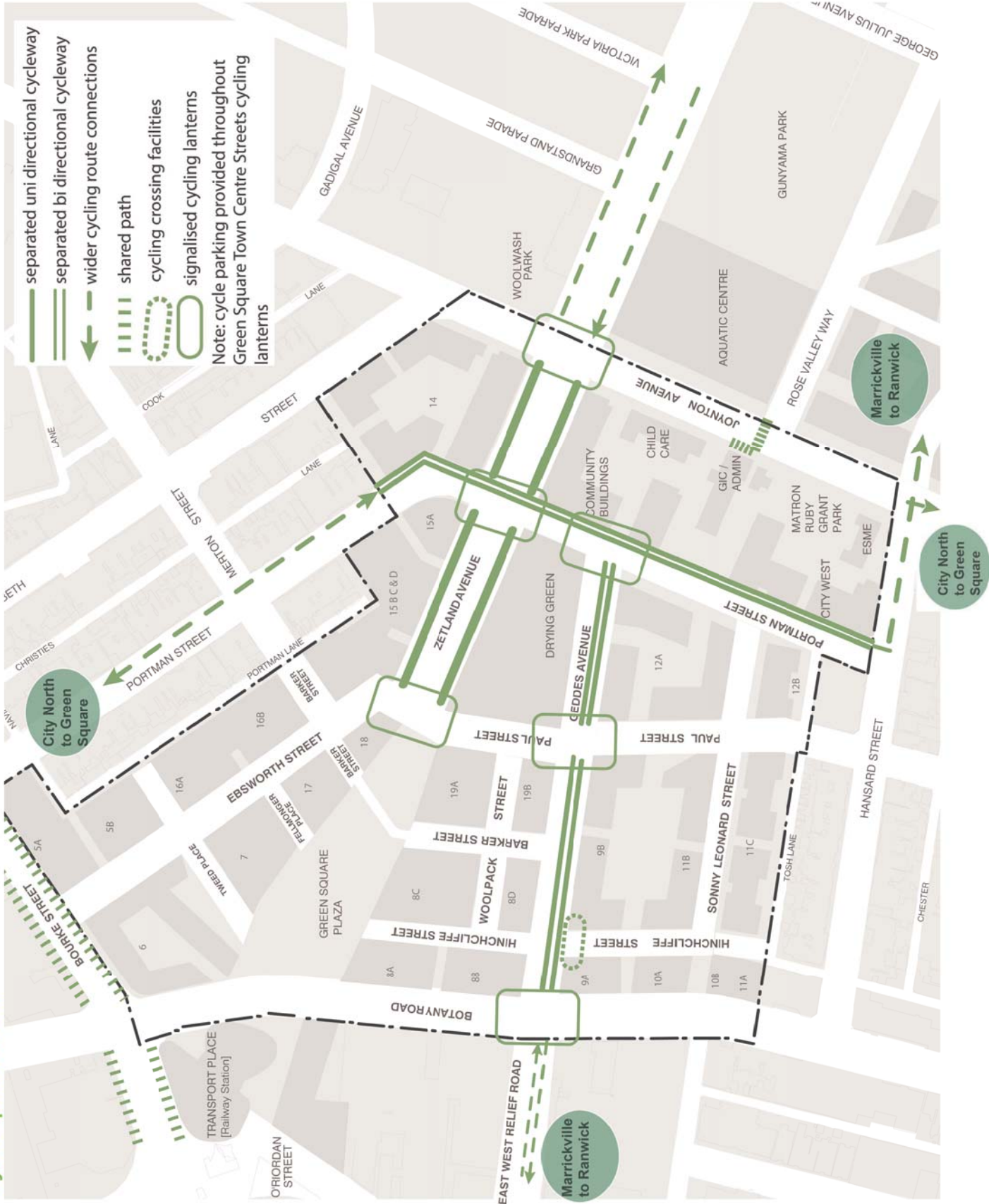


Green Square Town Centre framework principles and strategies

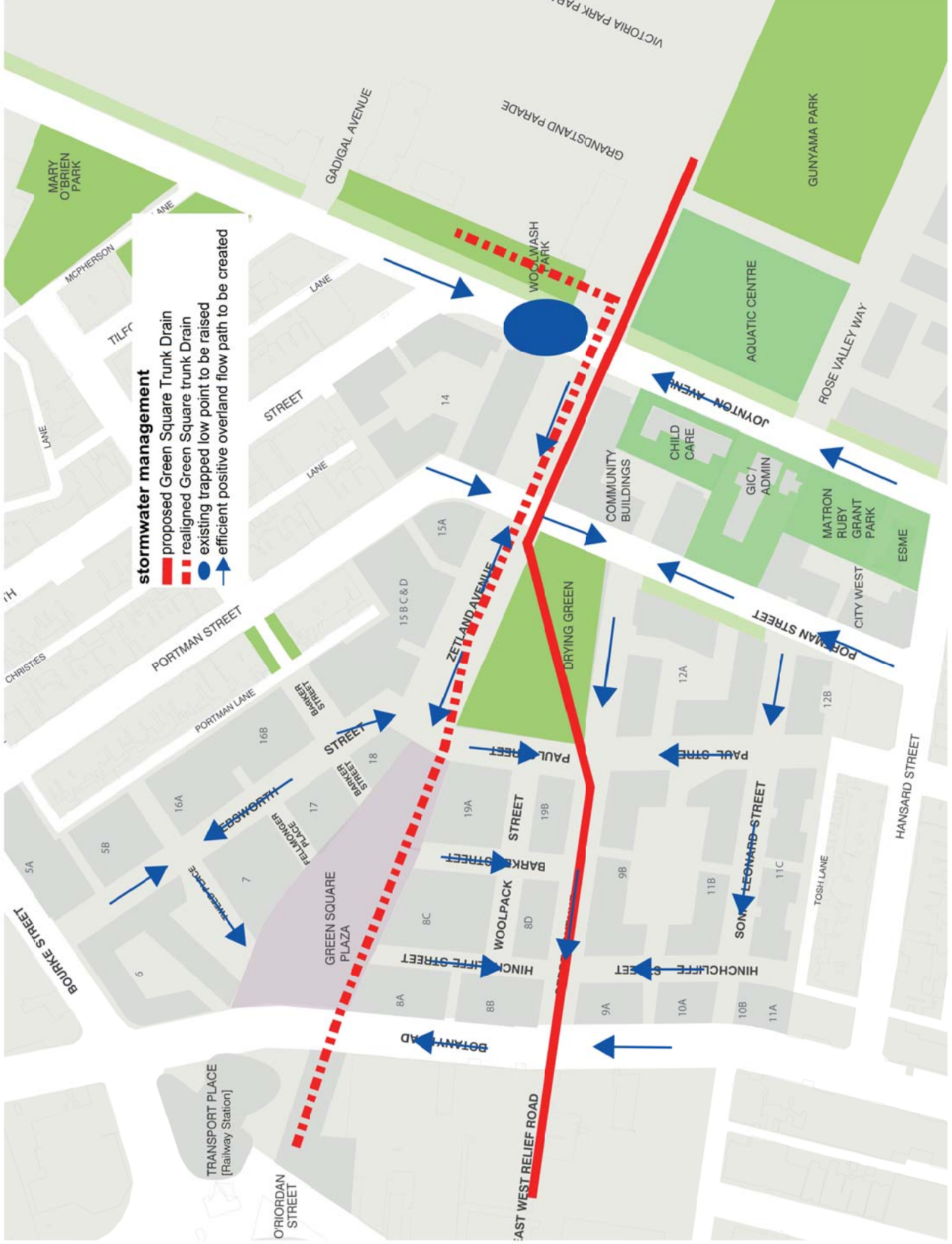
pedestrian connections




Green Square Town Centre framework principles and strategies
cycle provision

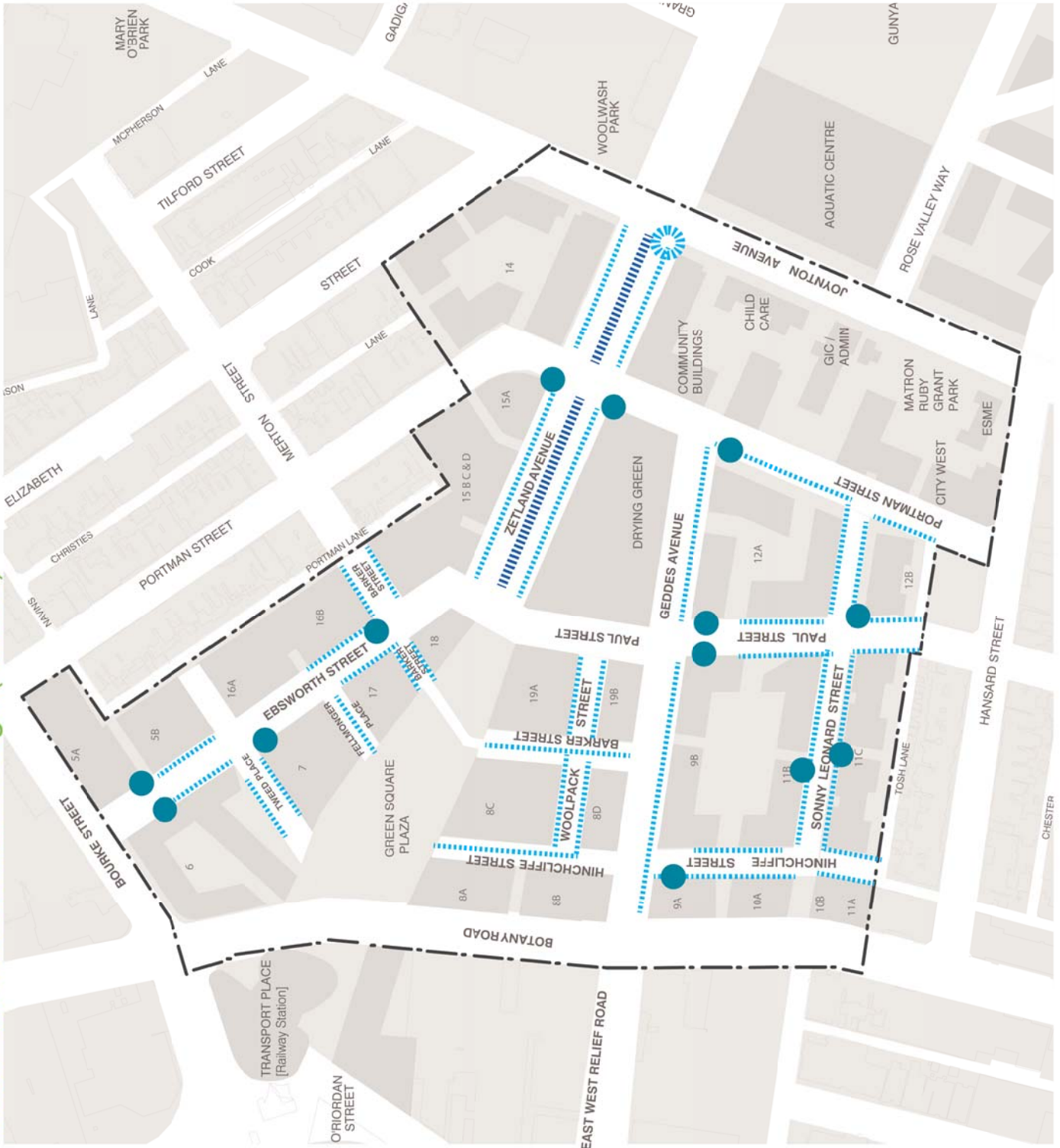


Green Square Town Centre framework principles and strategies
stormwater and grading



Green Square Town Centre framework principles and strategies
Water Sensitive Urban Design (WSUD)

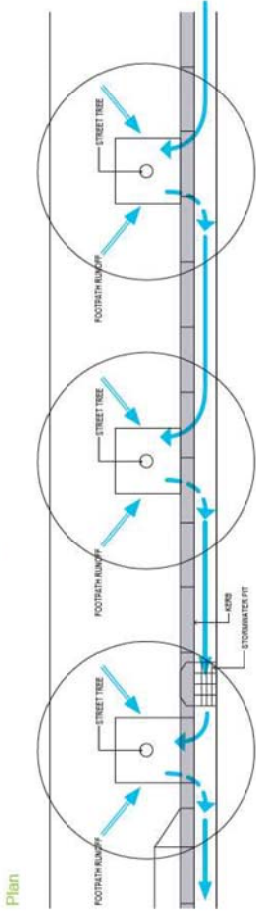
-  proposed rain garden
-  passively irrigated tree pits
-  passively irrigated median
-  gross pollutant trap



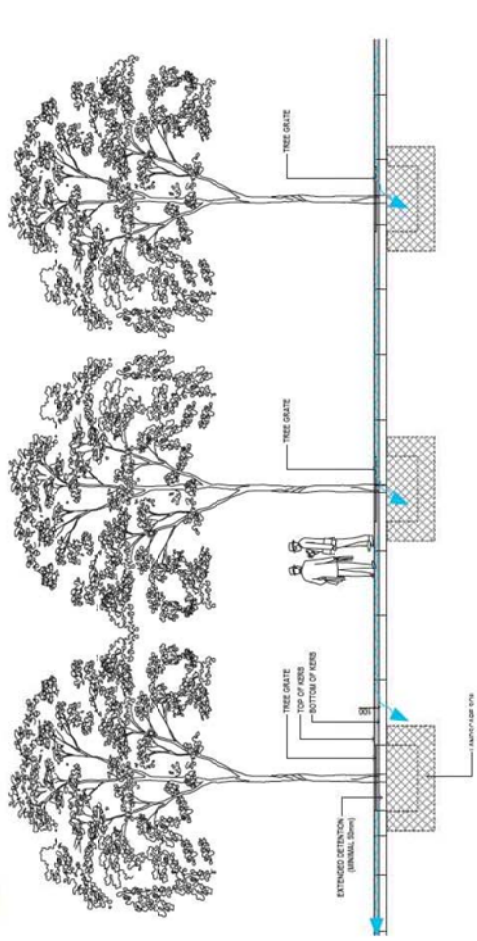
Green Square Town Centre framework principles and strategies

Water Sensitive Urban Design (WSUD)

flow of passive irrigation of street trees



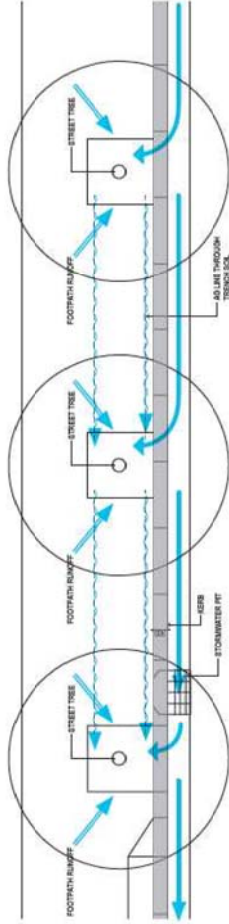
Section



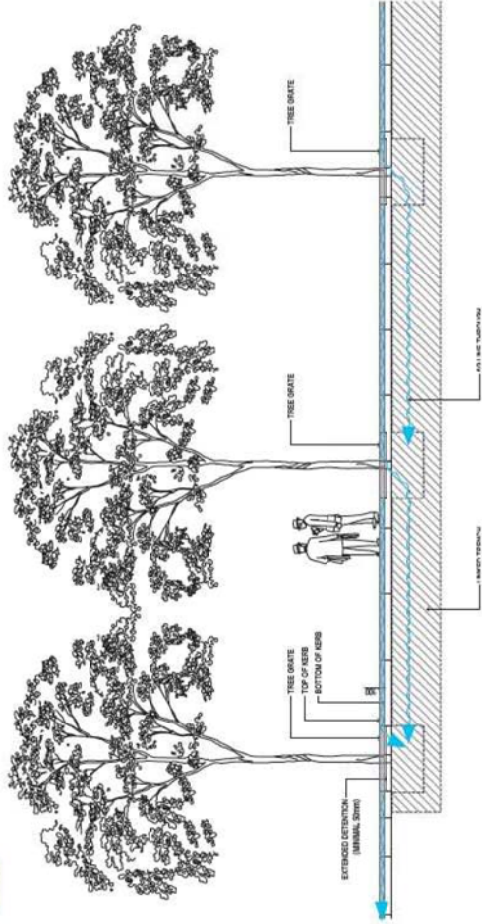
Typical inflow and overflow arrangement for passive irrigation of street trees

passive irrigation with linked trenches

Plan

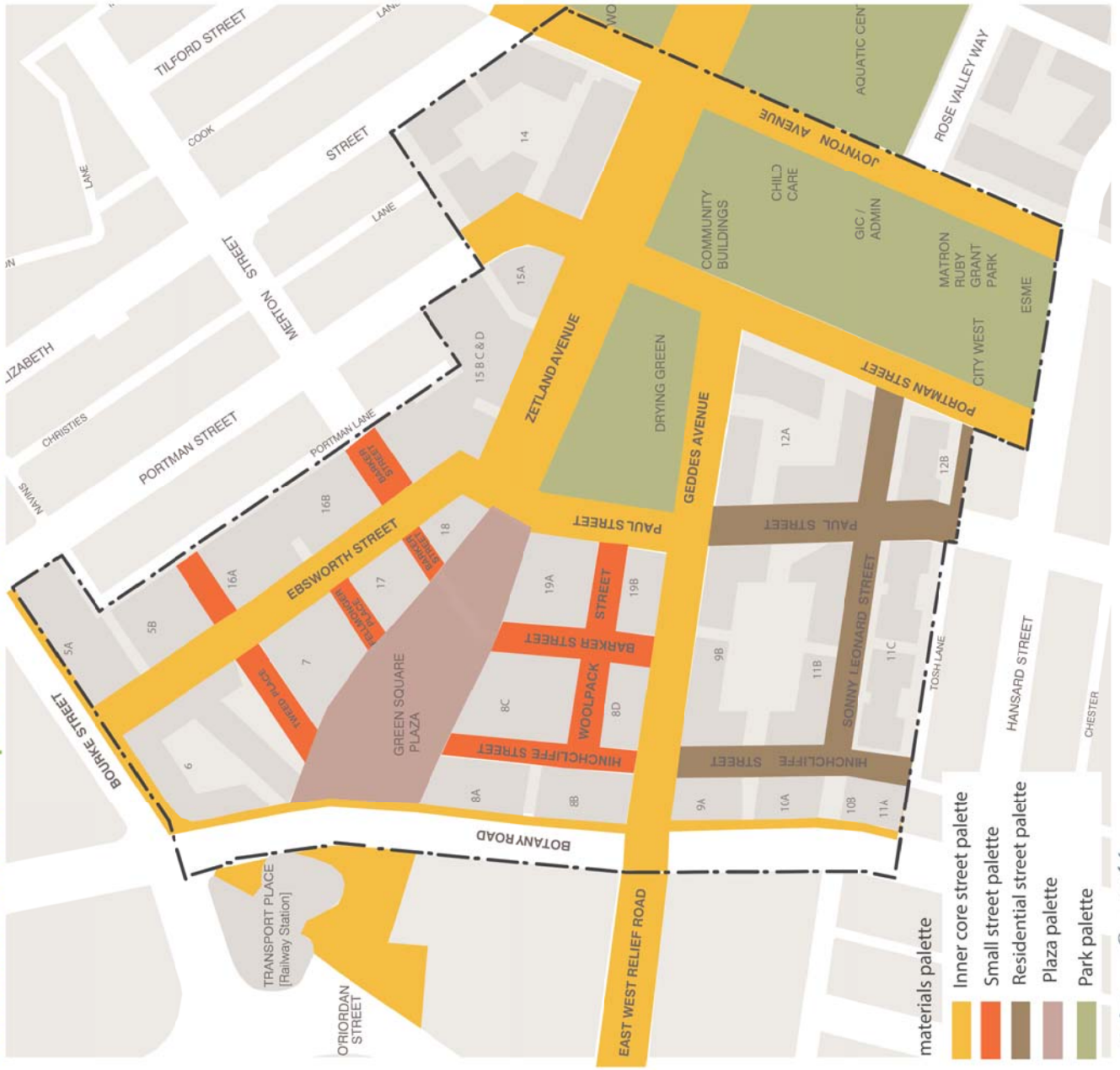


Section



Example of passive irrigation and water movement through Street Tree Pits with link trench

Green Square Town Centre Framework
cohesive materials palette - a unified frame



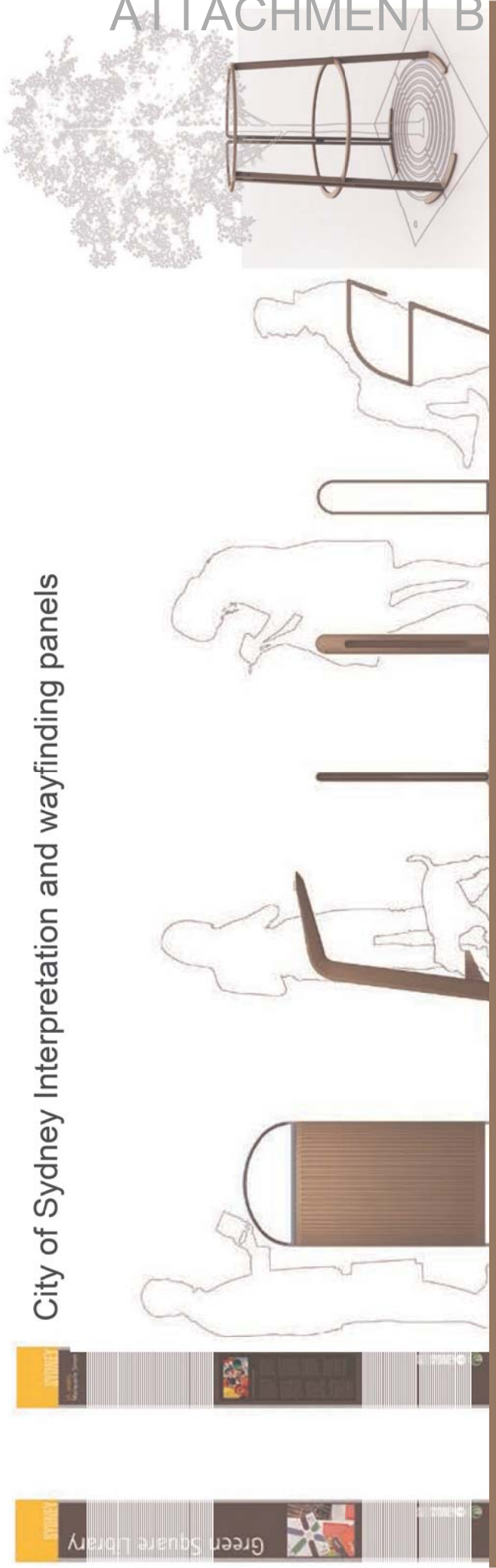
materials:
 a. concrete unit paving
 b. bluestone kerbs
 c. interlocking paving
 d. concrete dish drain



City of Sydney Village Palette – Redfern Street, Redfern

Green Square Town Centre Framework
cohesive materials palette - a unified frame

ATTACHMENT B



City of Sydney Interpretation and wayfinding panels

Wayfinding signage and furniture - CoS 'village bronze palette' (new Tzannes furniture range)

city of villages

Green Square Town Centre framework principles and strategies
 cohesive street tree planting palette - a unified frame



Green Square Town Centre street tree masterplan

Green Square Town Centre framework principles and strategies
 cohesive understorey planting palette - a unified frame

Green Square was once covered in wetlands, dunes and dense shrub land... the elements which came to characterise the area most was water: It ran southwards from the higher parts, pooling in lower places in the basin...



Liriope 'Evergreen Giant'

Garden Beds



Lomandra tanika



Juncus usitatus



Ficinia nodosa

Rain Gardens

Street understorey planting

city of villages